

# NMEA All State Jazz Audition ETUDE A1 - SHUFFLE

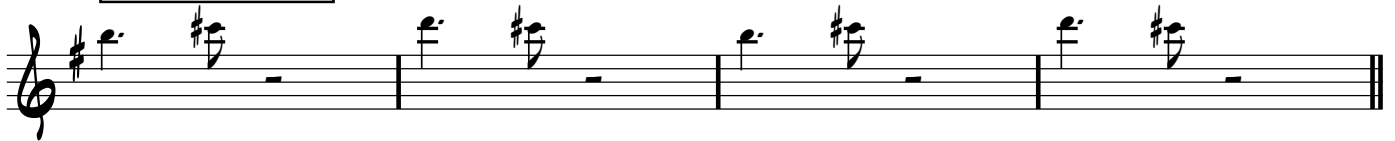
*This etude is for the exclusive, internal use of The Nebraska Music Educators Association  
Mr. Roger Groth and Dr. Evan Lee, Project Co-ordinators*

*Shuffle* (Swing 8ths): M.M. ♩ = 144

COUNTOFF:



INTRO (Organ)



ETUDE



2 **NMEA All State Jazz Audition Etude 1A-SHUFFLE** - BARITONE Saxophone

**IMPROVISE!**

Emi9

E7(#9)  
#5

17

A mi7

Emi9

21

C13(b5)

B7(#9)  
#5

Emi11

B7(#9)  
#5

25

**2nd CHORUS**

Emi9

E7(#9)  
#5

29

A mi7

Emi9

33

C13(b5)

B7(#9)  
#5

Emi11

37